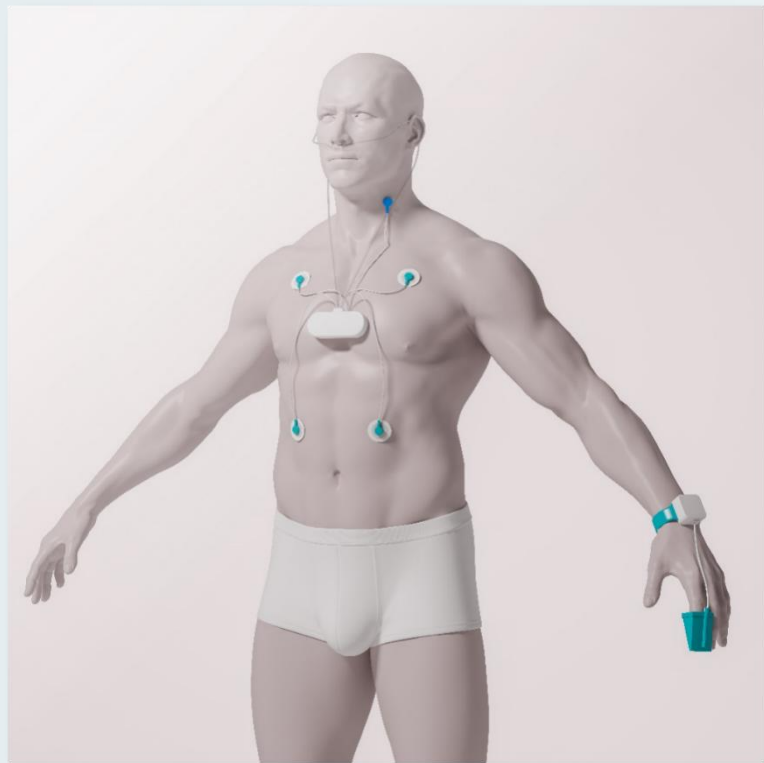
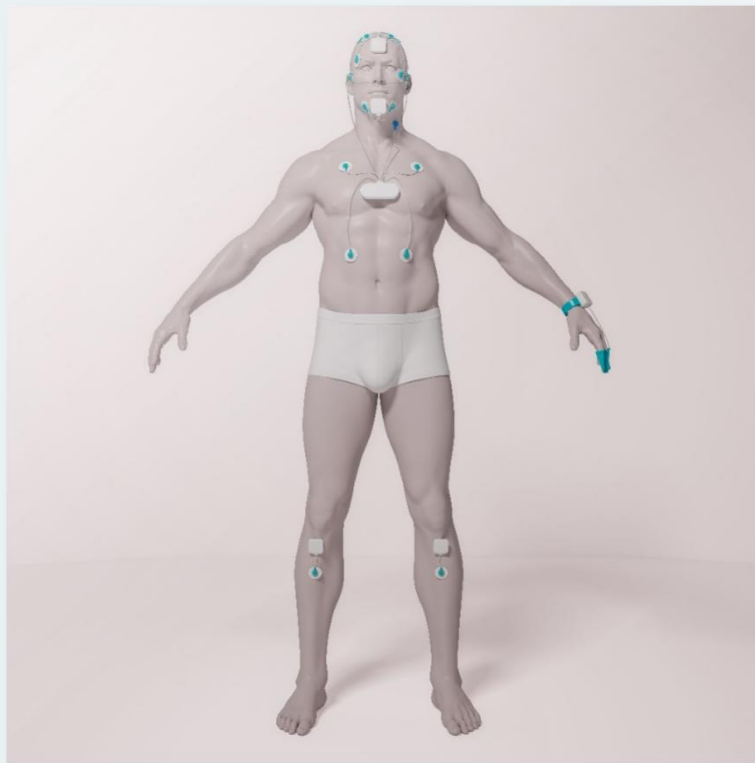



/01 Product Solution

Sleep Monitoring



Sleep Screening Device



Polysomnograph



Complete Device

Available Technical Result ---- Head Module



Acquisiti on Function	Signal Type	Channel	Sampling Rate	Detailed Indicators
EEG	Bioelectri city	6	500Hz	Bandwidth: 0.3Hz - 35Hz Voltage Measurement: Error not exceeding $\pm 5\%$ Common Mode Rejection Ratio: $\geq 100\text{dB}$ Noise Level: $\leq 1.5\mu\text{V}$ (peak-peak) Input Impedance: Not less than $10\text{M}\Omega$ Polarization Voltage Resistance: With a DC polarization voltage of $\pm 300\text{mV}$, the deviation does not exceed $\pm 5\%$
EOG	Bioelectri city	2	500Hz	Bandwidth: 0.3Hz - 35Hz Voltage Measurement: Error not exceeding $\pm 5\%$ Common Mode Rejection Ratio: $\geq 100\text{dB}$ Noise Level: $\leq 1.5\mu\text{V}$ (peak-peak) Input Impedance: Not less than $10\text{M}\Omega$ Polarization Voltage Resistance: With a DC polarization voltage of $\pm 300\text{mV}$, the deviation does not exceed $\pm 5\%$

Available Technical Result ---- Leg Modules



Acquisiti on Function	Signal Type	Channel	Sampling Rate	Detailed Indicators
EMG	Bioelectri city	1	500Hz	Bandwidth: 10Hz - 100Hz Voltage Measurement: Error not exceeding $\pm 5\%$ Common Mode Rejection Ratio: $\geq 100\text{dB}$ Noise Level: $\leq 5\mu\text{V}$ (peak - peak) Input Impedance: Not less than $10\text{M}\Omega$ Polarization Voltage Resistance: With a DC polarization voltage of $\pm 300\text{mV}$, the deviation does not exceed $\pm 5\%$

Available Technical Result ---- Chest and Abdomen Module



Acquisition Function	Signal Type	Channel	Sampling Rate	Detailed Indicators
Nasal Respiratory Airflow	Air Pressure	1	100Hz	Bandwidth: 0.03Hz - 40Hz Measurement Range: 10 - 40 times/minute Error: $\leq \pm 3$ times/minute
Oral-Nasal Respiratory Airflow	Temperature	1	100Hz	Bandwidth: 0.1Hz - 15Hz Measurement Range: 10 - 40 times/minute Error: $\leq \pm 3$ times/minute
Thoracoabdominal Respiratory Movement	Respiratory Impedance	1	100Hz	Bandwidth: 0.1Hz - 15Hz Measurement Range: 10 - 40 times/minute Error: $\leq \pm 3$ times/minute
ECG	Bioelectricity	2	500Hz	Bandwidth: 0.3Hz - 40Hz Voltage Measurement: Error not exceeding $\pm 5\%$ Common Mode Rejection Ratio: $\geq 89\text{dB}$ Noise Level: $\leq 5\mu\text{V}$ (peak - peak) Input Impedance: Not less than $10\text{M}\Omega$ Polarization Voltage Resistance: $\pm 300\text{mV}$
EMG	Bioelectricity	2	500Hz	Bandwidth: 10Hz - 100Hz Voltage Measurement: Error not exceeding $\pm 5\%$ Common Mode Rejection Ratio: $\geq 100\text{dB}$ Noise Level: $\leq 5\mu\text{V}$ (peak - peak) Input Impedance: Not less than $10\text{M}\Omega$ Polarization Voltage Resistance: $\pm 300\text{mV}$
Snoring Sound	Vibration	1	500Hz	Bandwidth: 10Hz - 100Hz

Available Technical Result ---- Wrist Module



Acquisition Function	Signal Type	Channel	Sampling Rate	Detailed Indicators
Pulse Rate	Optical Signal	1	25Hz	Measurement Range: 30 - 250 times/minute Error: ± 2 times/minute or $\pm 2\%$, whichever is greater
Blood Oxygen Saturation	Optical Signal	1	25Hz	Measurement Range: 35% - 100% Error: Within the range of 70% - 100%, the absolute error $\leq \pm 2\%$; less than 70%, not defined

Long-term Single-lead ECG Monitor



Dimensions: only 85x30x10 mm

Weight: less than 15g

Supports Bluetooth 5.1

Continuous monitoring time: more than 7 days

Supports USB 2.0

Built-in local memory

It can perform long-term dynamic electrocardiogram monitoring and effectively capture arrhythmia events.

Medical ECG Monitor



12-Lead ECG Monitoring

Supports 4G LTE CAT4

Supports USB 2.0

Built-in local memory

Real-time Early Warning of
Abnormal Events

Continuous Usage Time: More
than 24 Hours

Home ECG Monitor



12-lead electrocardiogram (ECG) monitoring

Supports 4G LTE CAT1

Supports USB 2.0

Comes with a built-in local storage device

Provides real-time early warnings for abnormal events

Can be used continuously for more than 24 hours

Continuous Digital Stethoscope Patch



Continuous Digital Stethoscope Patch

Weight: only 18.2g

Dimensions: 71.46*35.36*6.81mm

Dual-chamber Monitoring

Continuous Monitoring Time: more than 24 hours

Bluetooth Transmission Distance: more than 10 meters

Sampling Rate: more than 6 kHz

Continuous ECG/EMG Monitoring Patch



The weight: 12.2g.

Dimensions: 71.4635.366.81mm

Sampling rate: 250Hz

Continuous monitoring time: more than 24 hours

Bluetooth transmission distance: more than 10 meters

Sampling rate: not less than 1kHz

Internal noise: $\leq 5 \mu\text{Vp-p}$

Polarization voltage resistance: $\pm 300\text{mV}$

Standard signal accuracy: $\pm 5\%$

Continuous Blood Oxygen/Temperature Monitoring Patch



Weight: 11.5g

Dimensions: 71.4635.366.81mm

Continuous monitoring time: more than 24 hours

Bluetooth transmission distance: more than 10 meters

Body temperature measurement range: 32~42°C

Maximum body temperature measurement error: $\pm 2^{\circ}\text{C}$

Blood oxygen measurement range: 70% ~ 100%

Blood oxygen saturation measurement error: $\leq \pm 2\%$

Electrochemical Detector



Weight: 46.3g

Dimensions: 69.849.9417.88mm

Capable of detecting creatinine and potassium ion concentrations

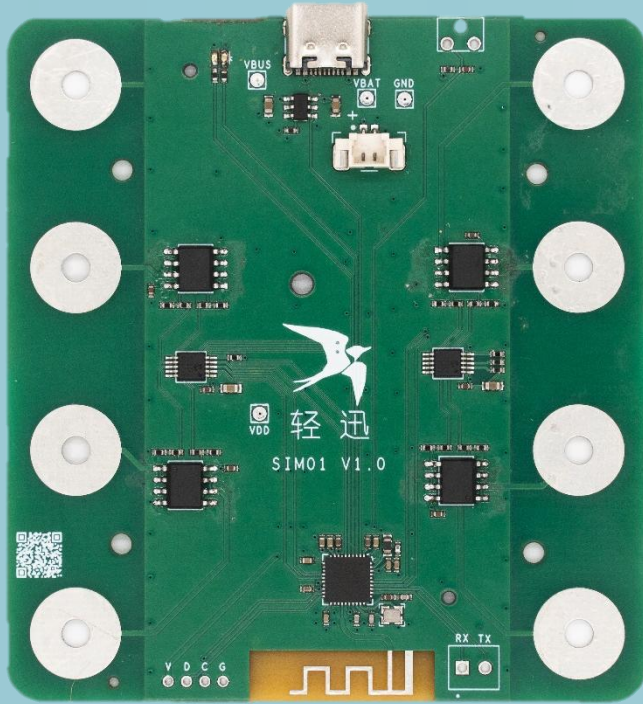
Bluetooth transmission distance: more than 10 meters

Sampling rate: more than 6 kHz

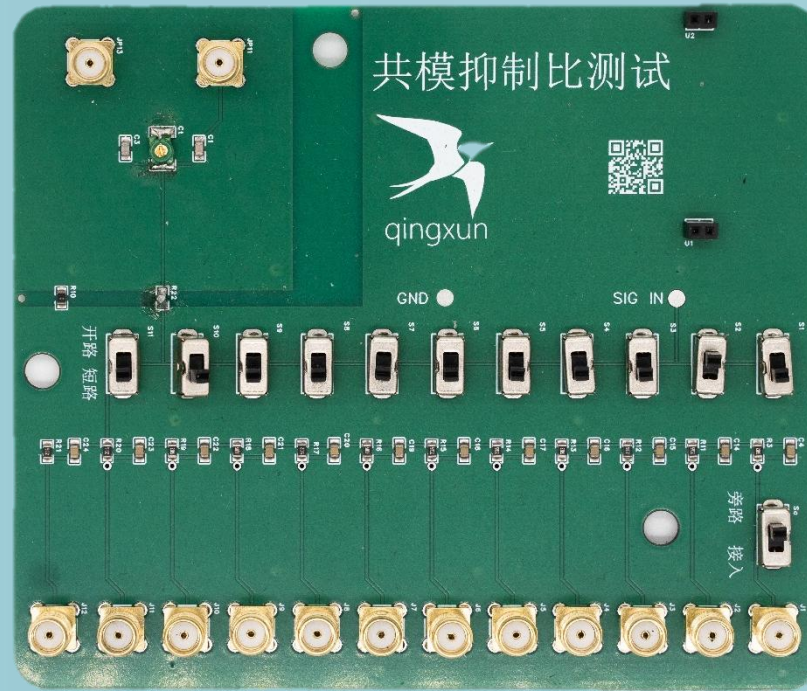


/02 Matching Products

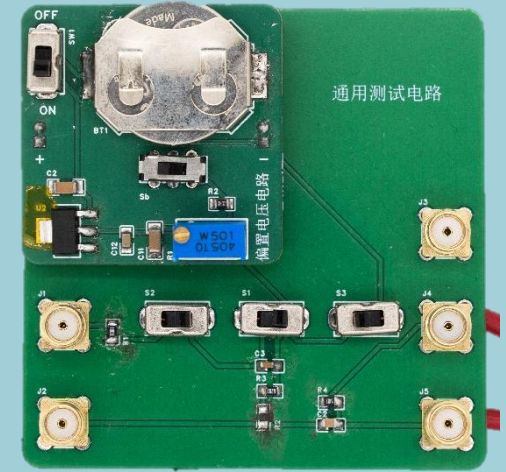
Testing Equipment for Electrical Safety of Bioelectric Products



Physiological Signal Simulation Type



Test Tooling Type



The initial version of this product has been developed. It will be further improved and mass-produced for sale in the future. This type of product has a high gross profit margin. Moreover, those who purchase this type of product are basically potential customers, so it will serve as an important customer acquisition channel.

Body Area Network Gateway



Dimensions: Only 50x41.6x15.2 mm

Supports Bluetooth 5.1

Supports 4G LTE CAT1

Supports USB 2.0

Can connect 7 Bluetooth devices simultaneously

Comes with local storage

Continuous usage time: More than 24 hours

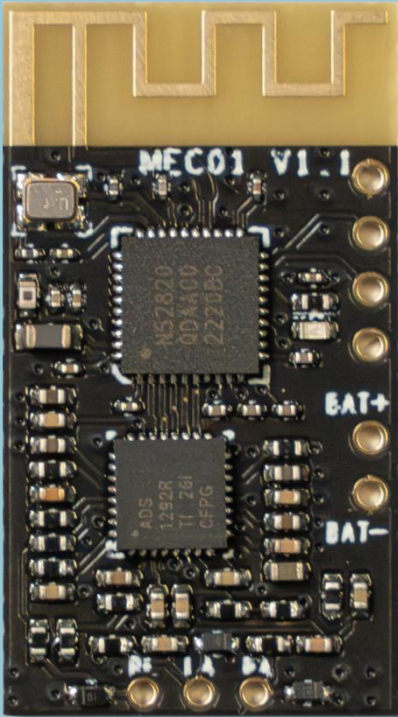
The BLE-4G gateway has been successfully developed. It has already been sold on a small scale to Tsinghua University and put into use in Peking Union Medical College Hospital and Chinese People's Liberation Army General Hospital. This gateway can interface with various wearable devices, enjoying a very wide range of applications. In the future, different models will be developed and it will be sold as a supporting product for customers.

/03 **Module**

The background features a complex network of thin grey lines connecting small circular nodes. These nodes are colored in a variety of muted tones including teal, blue, green, yellow, and orange. Overlaid on this network are several vertical bands of color: a light teal band on the left, a light blue band in the center, a light green band on the right, and a light orange band on the far right. The overall aesthetic is modern and technical.

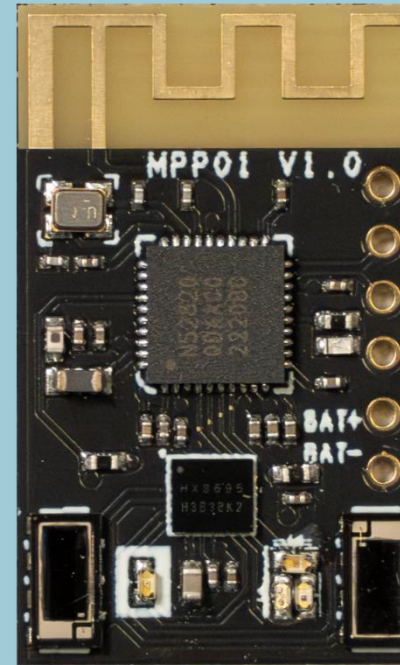
Physiological Index Monitoring Category

ECG/EMG/EEG Module



Dimension: 14.5*26mm
Input impedance: $\geq 500 \text{ M}\Omega$
Sampling rate: 125 - 1000Hz
Common mode rejection ratio: $> 100 \text{ dB}$
Internal noise: $\leq 1.5 \text{ }\mu\text{Vrms}$
Polarization voltage resistance: $\geq \pm 300\text{mV}$
It supports respiratory impedance monitoring.

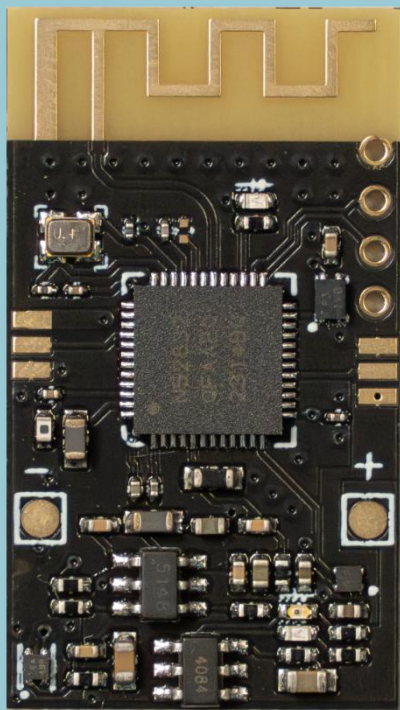
PPG Module



Dimension: 14.5*24mm
PD: 2 channels
LED: Green, Red, Infrared
Blood oxygen measurement range: 70% ~ 100%
Maximum error: $\leq \pm 3\%$
Pulse rate measurement range: 30 ~ 250 beats per minute
Maximum error: ± 2 beats per minute or $\pm 2\%$

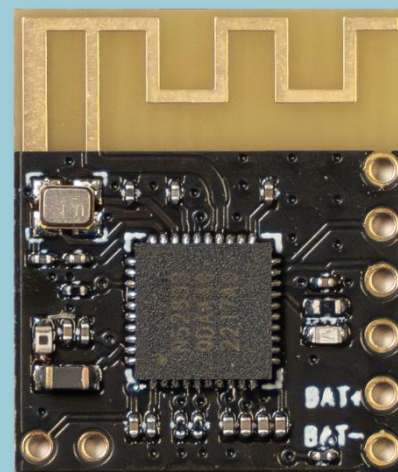
Physiological Index Monitoring Category

Digital Stethoscope Module



Size: 14.5*28.3mm
Input channels: 2 channels
Sampling rate: $\geq 4\text{kHz}$

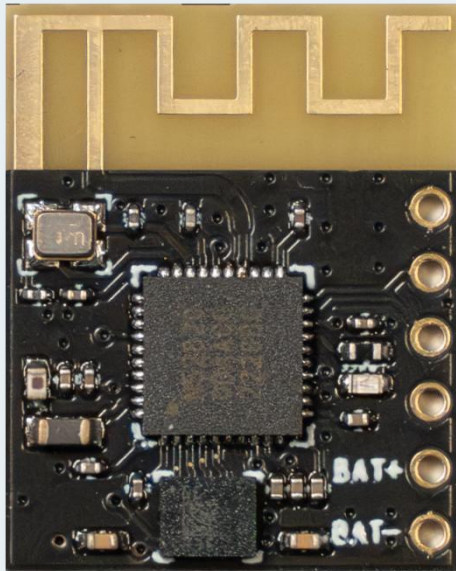
Body Temperature Module



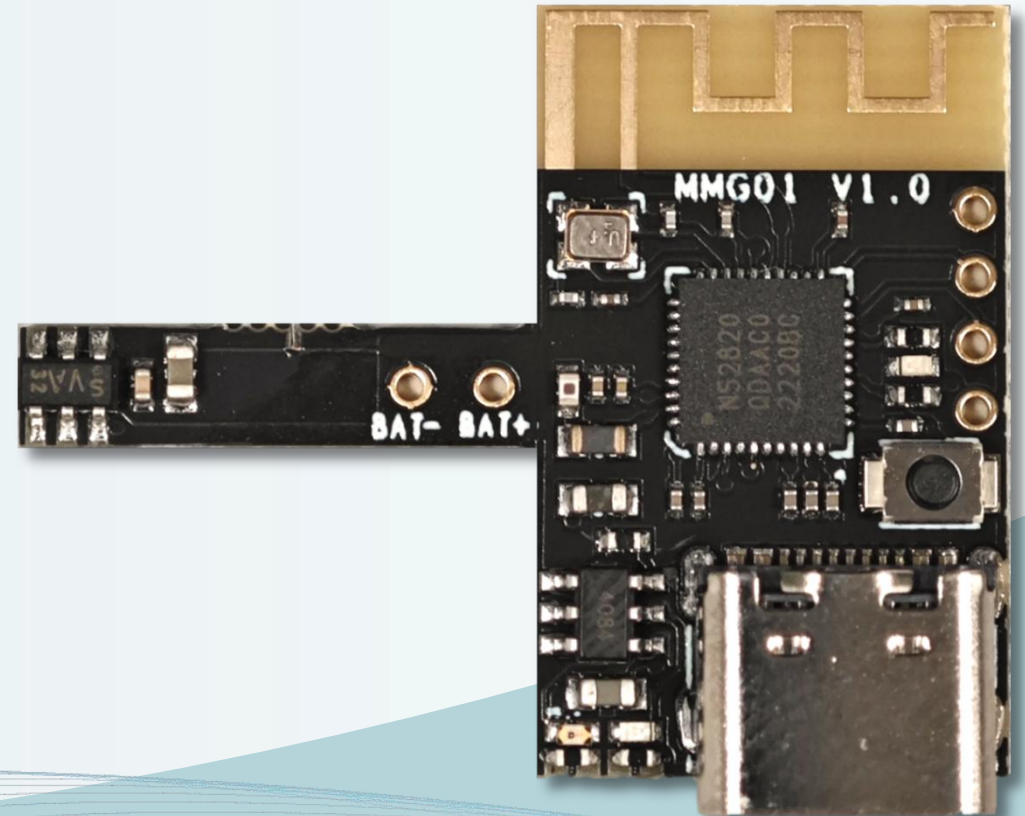
Size: 14.5*24mm
Temperature channel: 3 channels
Temperature volume range: $32^{\circ}\text{C} \sim 42^{\circ}\text{C}$
Maximum error: $\pm 0.1^{\circ}\text{C}$.

Physiological Index Monitoring Category

Motion Module

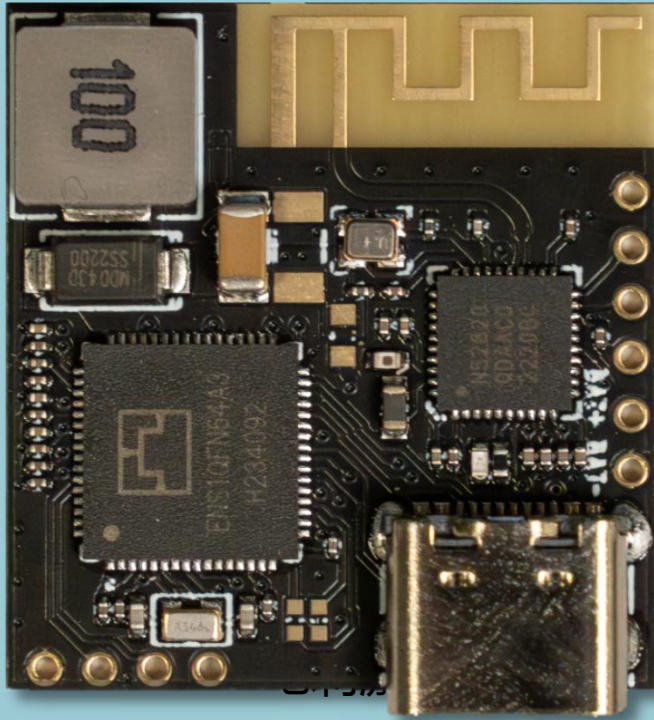


Magnetic Force Module



Therapy Category

Electric Stimulation Module




Dimension: 25.5*24.1mm

Output channels: 8 channels

Maximum voltage: 60V

Output waveforms: Sinusoidal/Triangular/Square or any waveform

Output frequency: Up to 250kHz



We firmly believe that: Efficiency is
the best way to reduce costs.

Hangzhou Huaheng Medical Equipment Co., Ltd.

Contact: Brian +86 15762892330

Address: Room 1009, Building 5, Jiabao Sci-Tech Innovation Center, No.2 Street, Qiantang
District, Hangzhou City